



Setup and Usage Instructions XL 2.0

Read this first!

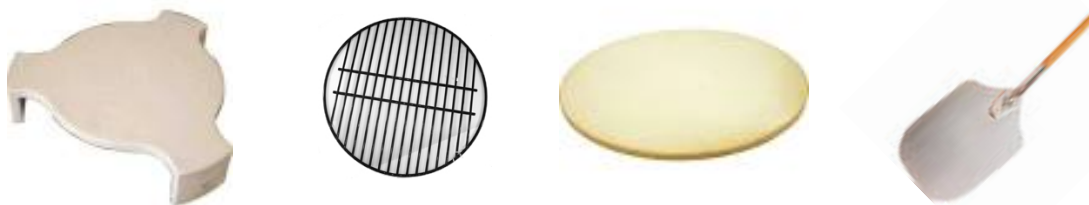
- 1) Forget the hacks that you have used to cook pizza. The Pizza-Porta™ cooks differently. Pizza cooking is a skill, practice makes your pizza better. Welcome to real pizza cooking.
- 2) A pizza peel is necessary to cook pizza in the Pizza-Porta®. A long-handle 12" or 14" wide peel works well. A wooden peel for placing and metal for retrieving is best.
- 3) Assembly (More details in later pages)
 - a) Assemble 4 sides of the XL Pizza-Porta by inserting tabs and putting bolts through the holes with nuts on the inside.
 - b) Put long screws through the handle, then long spacers, heat shield, small spacers, door and then put nuts on the inside of the door – tighten
 - c) Lift the lid of your XL BGE and set the Pizza-Porta on the base, aligning the edges equally from side to side, but ½ inch offset toward the front.
 - d) Lower the dome lid and hold it 1" above the Pizza-Porta. While keeping the lid up, slide the Pizza-Porta ½ inch toward the rear.
 - e) Make sure that tabs on the top of the Pizza-Porta are inside the BGE lid and that the felt is in contact with the top of the Pizza-Porta. *If the Pizza-Porta does not fit see below.*
- 4) All Big Green Egg® grill hinges are adjusted a little differently and they often slide down with use. Test the fit before you start a fire. Your Pizza-Porta is designed to shift around a bit to fit. A little air leak is ok.
- 5) Good Pizza starts with good dough try making your own or buying from a restaurant. It is much easier to make 2-3 12" pizzas than it is to make 1–16" pizza. Dough handling, stretching, transferring are all easier with an 8 oz. dough ball. The Pizza-Porta allows you to cook fast so pizzas take only 3-5 minutes to cook.
- 6) 600°F to 650°F is a great temperature to start and experiment. Make sure you create an air gap between the pizza stone and the plate setter using aluminum foil balls, or other spacers on top of the cooking grate.
- 7) Raw pizza dough should be floured so it is not sticky. Make sure the dough is floured well, and then sprinkle a pinch of semolina on the wooden peel to make it slide easily. Make sure it will slide before you put it in the Pizza-Porta. Never put cornmeal on the stone.
- 8) Rotate your pizza after 2 minutes and check the bottom – the fire will sometimes be hotter on one side. Pizza needs to be watched, this is not a Boston Butt.
- 9) Make sure to lock the door closed when shutting down.
- 10) Practice makes perfect - and your friends won't mind testing!

Setup and Usage Instructions

Safety: The Pizza-Porta is inserted into a Big Green Egg® or other kamado grill. Pizza cooking is done at high temperature (>500F). For this reason, extreme caution must be observed when interacting with the Pizza-Porta™. Everything will be very **HOT**.

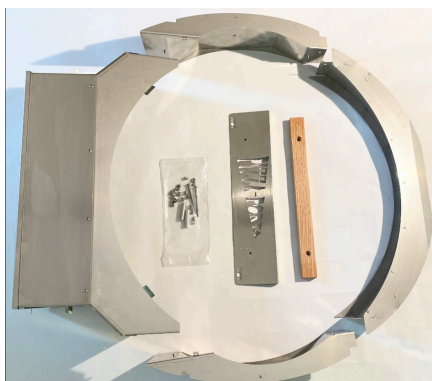
- Never touch, adjust, lean against or contact parts other than the handle. It is **hot**.
- Use caution when lifting the door to close it – the edges are **hot**.
- Ensure that your table or other surrounding accessories are not in contact with the outside of the kamado/BGE grill. This will be a high temperature cook.
- You may experience excess smoke and flame while your grill is getting up to temperature. Burn off the excess grease before cooking pizza.
- At shutdown, allow the kamado/BGE to cool before handling the Pizza-Porta.
- Use an oven mitt or pizza peel to adjust the air vents. They are **hot** too.
- Do not place stickers, paint, plastic or other materials on the Pizza-Porta.
- Use caution when assembling as edges may be sharp

For best results, the following accessories are recommended: Plate setter or other diffusion stone, non-conducting spacer (metal grate), Pizza Stone (14"-16" is best), Pizza Peel (wood and/or aluminum)

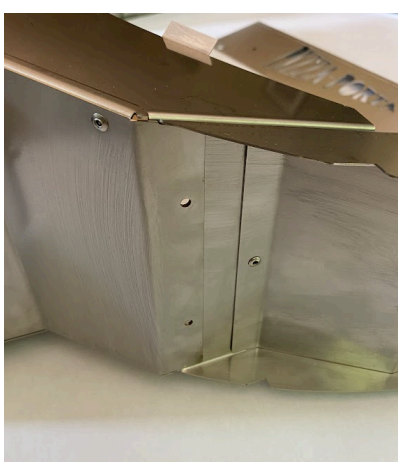


Assemble the unit

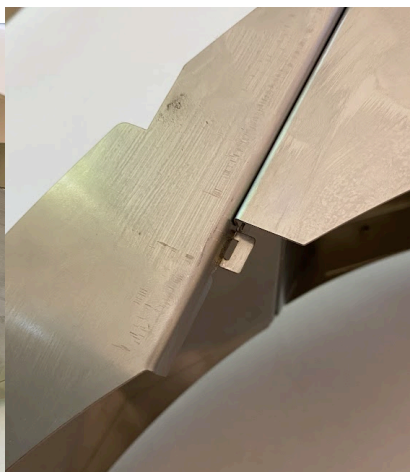
Laying out of the unit stand shall be justly arranged. (Just kidding -we tried to write this in English). Start by arranging the parts on a scratch resistant surface so that you get everything right-side up. The bottom is flat, the top slopes down toward the rear section. Placing the bottom of the door over the edge of a table will allow everything to sit on a flat plane. Lay the parts out as shown to ensure you have everything aligned. It is easy to get the left/right sections switched.



Next, (the trickiest portion) slide the front tab of the side panel *behind* the screw flap of the 'door box' (First image). Make sure that the top of the side panel is aligned so that the small indexing tab engages with the top panel of the 'door box' (second photo). The pieces are cut to align precisely. Install the top and bottom screws to secure the side panel to the 'door box'. Tighten the nuts on the inside. Repeat on the other side. Attach both of the side panels before adding the rear section. There are 4 screws for this step. Some maneuvering may be necessary to get the screws inserted.



Side alignment

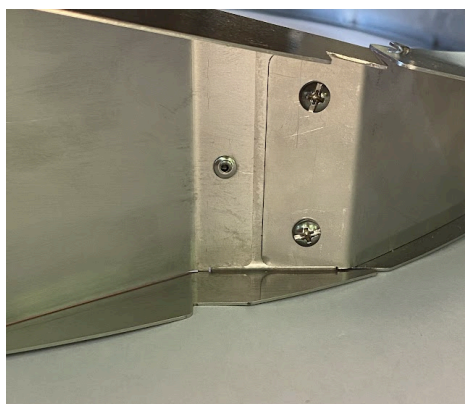


Top view



Side view - bolted

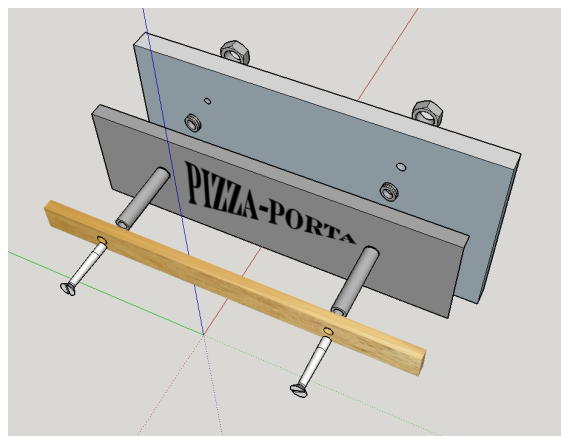
After the side panels are attached to the door box, attach the rear section. The side panel again slides behind the screw flap of the rear section. Two screws complete the assembly. Ensure that all of the tabs are aligned leaving a flat plane to sit against the gasket of the BGE.



Rear section bolted in place

Assemble the handle:

Assemble the pieces as shown. The locknuts are the only part on the inside of the door. Hold the screws with a screwdriver and tighten the nuts on the inside of the door. Make sure that the door and the aluminum heat-shield are separated with the small spacer.



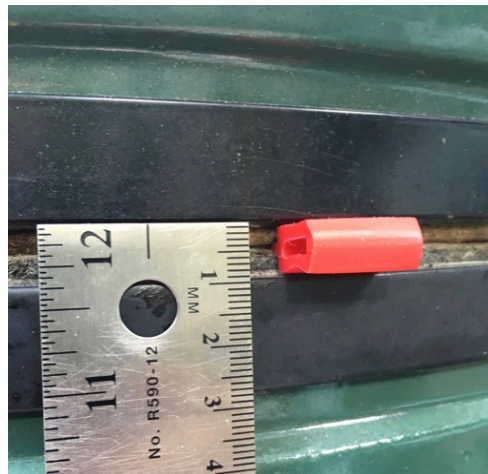
(Hint – push the long screws into the handle and tape over the heads to hold them in the handle while assembling. Thread the pieces as shown.)

The interior friction door latch should be adjusted by hand when cool. Put thumb pressure on the latch up or down to increase or decrease the closing force. Note that heat expands the door slightly so the latch adjustment may change at high temperature.

Align Hinges to BGE Factory setting: (Often necessary on the XL)

- The Pizza-Porta is designed to fit the XL when it is set up at the factory settings.
- The XL has very long hinge straps that will naturally expand when they are heated. The springs will then pull the top band out of alignment over time. This is not unusual after a number of uses. The XL is large, so a 1° angle can leave a large gap in the front.

- The factory alignment spacers provided by BGE for band alignment purposes hold the bands 10-12mm or 3/8" apart all the way around (red in photo).
- Note that the bands are equal distance up and down from the felt.
- Follow the Big Green Egg instructions for aligning the dome to the base. Once aligned, try the Pizza-Porta fit again.
- Video:
www.youtube.com/watch?v=iWV/kmvjx530



Inserting the Pizza-Porta:

The Big Green Egg uses a cantilever hinge. To get proper alignment:

- Lock the Pizza-Porta door shut.
- Open the grill lid fully and place the XL Pizza-Porta on the base as shown.
- Visually align the unit left and right and front and back.
- Carefully lower the dome down 1" above the Pizza-Porta. It is designed so that the back of the dome brushes past the top of the Pizza-Porta on the way down. You may have to pull the unit forward slightly so that the dome clears at the rear.
- Before the lid is fully lowered, slide the Pizza-Porta toward the rear.
- The top flap on the rear portion of the Pizza-Porta can be hand-bent down slightly if the unit catches on the dome lid.
- The two top, front safety tabs are provided to keep the unit in place when the door is opened. Ensure these tabs are inside the dome and not holding the dome up.





Lighting and SETUP: (Experiment with your setup before lighting). Load your grill with a full load of charcoal (above the fire ring). Light your charcoal as per normal. While the fire is getting established, arrange the plate-setter with the legs facing down AND ONE OF THE LEGS IN FRONT. Place the metal cooking grate on top. Use foil balls or other spacers for ½” to 1” lift and then your pizza stone on top. Use a layer of aluminum foil under the pizza stone as an added deflector if your stone gets hotter than the dome.



Airflow: Start with the Pizza-Porta with vents closed and door unlocked. Open the top chimney vent of the grill until it reaches 500F. At this temperature, close off the top vent of the dome completely and use only the Pizza-Porta vents from here. Each grill responds slightly different to airflow, you can adjust the temperature by coordinating the bottom vent with the two Pizza-Porta vents.

The ceramic of the pizza stone, dome, and plate setter require extra time to reach temperature. Stabilize the temperature for at least 20 minutes. The temperature will fluctuate with the door open before all of the materials get up to temperature. Do not cook on a stone that is less than 400F (using an infrared check). For thicker pizza use temperatures in the 400F range for 8-10 minutes, while thin Neapolitan pizzas will cook above 600F for 3 to 4 minutes. It is a good practice to ‘break the seal’ of a dough to the stone with a metal peel after 30-40 seconds – especially on a hot stone. Don’t cook by stopwatch - Check the pizza bottom often to ensure it is cooking evenly and the top and bottom are progressing at the same rate. Each pizza will cook differently. Often a mid-cook rotation is beneficial. A full charcoal load at 600F should last about 3 hours, or about 15 pizzas!



**Cap the top to achieve optimal airflow
Pizza cooks with:**

- **Conductive** heat through the stone
- **Radiant** heat from the hot dome
- **Convection** from hot air flowing across the pizza

Cautions, Hints, and Tricks:

Pizza is part art and part science and it takes skill. The more pizzas you make the better the results will be. Experiment with different temperatures and setups to get your cooking dialed in.

The door will expand as it heats up. Minor adjustments to the interior friction latching tab may be required. Adjust so that at high temperature the latch engages with a firm push and the door remains closed.

Since you have contained the heat in the dome, you can use a doming technique. Hold the pizza on a metal peel up high in the dome for 20 -30 seconds to top-brown it.

Heating up all of the ceramic of the grill and the stone requires a great deal of energy. Once heated and settled, you can adjust the vents to hold your desired temperature.

Gaskets or felt. Cooking at high temperatures is tough on a gasket in any configuration. Use caution removing or sliding the unit. It is best to remove the Pizza-Porta when the grill is warm so that grease does not stick the gasket to the Pizza-Porta.